



International System Integrators

MILLWIDE SOFTWARE, OPTIMIZATION & CONTROL SOLUTIONS

1 Kilns

KILN DEVELOPMENT PARTNERSHIP

“Consistent and swift timber drying solutions”

Automation and Electronics has a long-standing partnership with KDS/Windsor. Together these two companies have formulated the Dryspec™ and DryspecCDK™ kiln control programs which are the leading edge technology for monitoring both continuous and batch kilns.

KDS/Windsor are rapidly becoming the International benchmark for effective kiln drying of timber.

**NEW ZEALAND
KILNS**

Recently Automation & Electronics were involved in the following kiln projects . . .

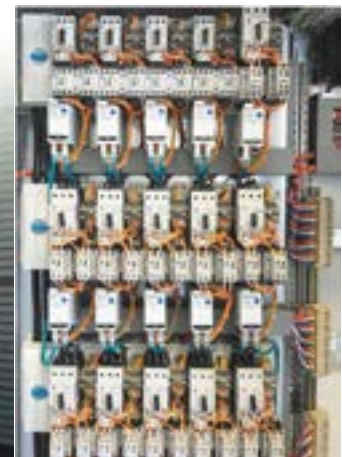
Pan Pac Forest Products (Otago Ltd), Milburn - Continuous Drying Kiln (CDK).

This installation featured a new Windsor CDK with DryspecCDK™ as the control system.

A&E also installed a motor control centre using Rockwell E300 Ethernet starters (pictured).



Pictured: New CDK at Panpac Milburn



Nelson Forest Ltd, Nelson - CDK.

A new Windsor Kiln was installed with DryspecCDK™ as the control system, also using Rockwell E300 starters.

Craigpine Timber Ltd, Winton - Kiln Conversion.

Windsor was asked by Craigpine to convert two of their existing single track kilns into a single CDK.

A&E were selected to supply the MCC as well as install and commission the Dryspec CDK™ controls.

Juken NZ Ltd - Kiln relocation and controls upgrade.

Juken have relocated three kilns from their site in Kaitaia. A double track kiln was relocated to their site in Masterton and the entire site was upgraded to Dryspec2000™. Two single track kilns were relocated to Gisborne and added to their existing Dryspec2000™ control system.

**A&E EXPO
STANDS 2018**

HMA NATIONAL CONFERENCE - HYATT REGENCY GREENVILLE, SOUTH CAROLINA, USA - MARCH 21ST - 23RD 2018

EXPO RICHMOND - RICHMOND RACEWAY COMPLEX, VIRGINIA, USA - MAY 18TH - 19TH 2018

EXPO RICHMOND



TIMBER PROCESSING & ENERGY EXPO 2018, PORTLAND, OREGON, USA - OCTOBER 17TH - 19TH 2018

www.timberprocessingandenergyexpo.com



NEW ZEALAND OFFICE
P.O. Box 4044 - Mt Maunganui 3149
Ph:+ 64 7 5746223 Fax : + 64 7 5746228
Email sales@automationelec.com
Web www.automationelec.com



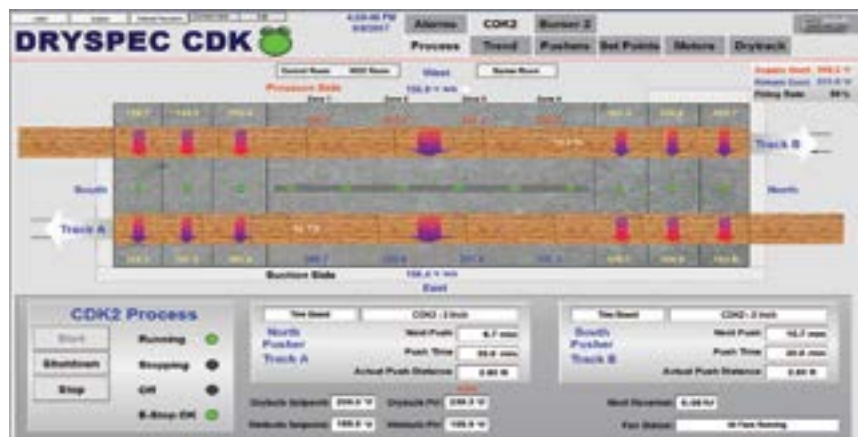
UNITED STATES OF AMERICA OFFICE
P.O Box 38726 - Shreveport, Louisiana 71133
Ph +1 318 548 5138
Email joe@automationelecusa.com
Web. www.automationelecusa.com

AUSTRALIAN KILNS

Wespine Industries Pty Ltd, Bunbury, Western Australia - Upgrade to Dryspec³™
 Wespine's system was upgraded from Dryspec2000™ to Dryspec³™ for their existing kilns. Dryspec³™ is written on Allan Bradley Factory Talk SCADA software.

CANADIAN & USA KILNS

Three new CDK's have been commissioned by our USA based engineer Alex Trapski. These were installed at Westervelt Lumber in Tuscaloosa, Alabama; Eacom Timber Corp in Timmins, Ontario and West Fraser Chetwynd in British Columbia. Both Westervelt and Eacom were installed with the latest version of DrytrackECHO which is a realtime moisture measuring system that makes adjustments to the push rate based on the average moisture readings from a series of lumber packs. This fully automated control provides a constant output of lumber at the desired moisture content.



Pictured: A&E Control Panel at Eacom Timber

Pictured: A&E CDK Process Screen at Eacom Timber

2

BOILER UPGRADE

A&E BoilerView upgrade

Automation & Electronics have installed their BoilerView™ boiler control program onto two boilers this year.



Toi Ohomai Institute of Technology, Rotorua - New Boiler Installation

Toi Ohomai installed a new Scotts Engineering Boiler along with a Morrow Engineering sawdust burning furnace. A&E's BoilerView™ was chosen to control the 1 mW steam system.



Craigpine Timber Ltd, Winton - Control Upgrade

Craigpine needed to get better control of their two boiler system. The mill was having to add wood chip to their sawdust in order to have enough fuel to dry all of their timber. Adding BoilerView™ with in-line oxygen meters monitoring combustion efficiency, has seen a vast improvement in combustion control, with wood chip no longer needing to be added.

3

NEW PRODUCT

KDS Fuel Tracker

Wood fired furnaces that use mixed fuel are hard to manage without good control of the individual fuels.



KDS Fuel tracker monitors the moisture content of a mixed fuel allowing a Furnace Control Program to increase or decrease the amount of a fuel to enable the furnace to get fuel of a consistent moisture content.

This allows for effective boiler tuning, as a well-tuned boiler uses less fuel for a given heat output.

For Wood Fuel Applications

- Green Sawdust Burner Systems
- Dry Shavings Burner Systems
- Boiler Systems
- Fuel Mixing Systems for constant fuel moisture content
- And other Applications

BENEFITS:

- Improved combustion efficiency & clean burning
- Enhanced product quality & consistency
- Improved BTU output of energy plants
- Easier start-ups
- Increased overall process productivity & efficiency

3

NEW PRODUCT

The Industry TUFF IP Camera is here!

Exclusive To Automation & Electronics NZ Ltd

Ideal For All Security And Monitoring Situations



Opticom CC04-IP2M Industrial Camera

FEATURES:

- 1/2.9" 2.43M PS CMOS Sensor
- 3.8mm (F2.0) Fixed Lens
- Max. 30fps @ 2MP (1920x1080)
- Dual Stream (H.264, MJPEG)
- PoE or 12V DC Power
- 8 Piece IR LED Array
- IP67 Waterproof / Dustproof
- Stainless & Explosion Proof Housing Options

3 NEW PRODUCT

Protect Your Expensive Machinery From Hidden Metallic Objects with . . .

Metal Shark Metal Detector

Whakatane Board Mills and PanPac Otago both purchased Metal Shark Metal Detectors

FEATURES:

- Shortest Metal Free Zone in the industry
- 24" Sensing for metal from 3 sides provides Maximum Protection
- Detector is molded as an integral part of the fiberglass section
- Stainless Steel housings provide Total Shielding against transient influences that cause false/nuisance tripping
- Easy to install into conveyors with or without an existing system
- Superior performance vs. Flat Plate style detector



BENEFITS:

- Less Down Time
- Avoid Unnecessary Machine Repairs



NEW STAFF MEMBERS NEW ZEALAND

A&E NZ WELCOMES

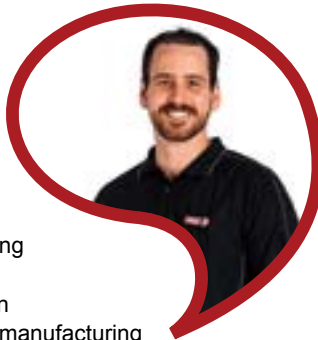
Controls Systems Engineer Lance Mustard

Lance joined Automation & Electronics in August as a control systems engineer working on PLC control systems for all types of applications. He is from Tauranga and has been an electrician for the past 12 years, covering all aspects of electrical work.

Recently Lance was the lead electrician on multiple large industrial projects for manufacturing and processing sites as well as chemical storage facilities and was involved with design and build of cargo handling equipment for a local manufacturing firm which is shipped to ports around the world.

He describes himself as pretty easy going and keen to learn. He has an 8 year old daughter Ella, a lovely partner Kirstie and a border collie called Rocco. In his spare time he enjoys hunting.

Lance is currently working on a new Dryspec kiln PC and a new EdgerView™ system.



Computer Software Engineer William Irwin

William started at Automation & Electronics in August.

He has a Bachelor of Science Degree in Computer Science from the University of Cape Town and a Post Graduate Diploma of Science in Computer Science from the University of Auckland.

He has worked in the machine vision and professional computer graphics fields for over ten years. He has also worked on the machine vision system for sorting fruit at Compac Sorting Equipment and on the DeepView product at Right Hemisphere (since acquired by SAP).

Additionally he gained experience working at Kaseya on software for Managed Service Providers, at TriggerHappy on an iPad platform for sharing user created animations and at Plex.tv on software for sharing media across all of a user's devices. He is active in the retro-computing scene and enjoys collecting and programming the old machines he grew up with.



NEW ZEALAND OFFICE
P.O. Box 4044 - Mt Maunganui 3149
Ph: + 64 7 5746223 Fax : + 64 7 5746228
Email sales@automationelec.com
Web www.automationelec.com



UNITED STATES OF AMERICA OFFICE
P.O. Box 38726 - Shreveport, Louisiana 71133
Ph +1 318 548 5138
Email joe@automationelecusa.com
Web. www.automationelecusa.com